



CLC-7 Polyclonal Antibody

Catalog No	YP-Ab-16401
Isotype	IgG
Reactivity	Human;Mouse;Rat
Applications	WB;ELISA
Gene Name	CLCN7
Protein Name	H(+)/Cl(-) exchange transporter 7
Immunogen	The antiserum was produced against synthesized peptide derived from human CLCN7. AA range:10-59
Specificity	CLC-7 Polyclonal Antibody detects endogenous levels of CLC-7 protein.
Formulation	Liquid in PBS containing 50% glycerol, 0.5% BSA and 0.02% sodium azide.
Source	Polyclonal, Rabbit,IgG
Purification	The antibody was affinity-purified from rabbit antiserum by affinity-chromatography using epitope-specific immunogen.
Dilution	Western Blot: 1/500 - 1/2000. ELISA: 1/40000. Not yet tested in other applications.
Concentration	1 mg/ml
Purity	≥90%
Storage Stability	-20°C/1 year
Synonyms	CLCN7; H(+)/Cl(-) exchange transporter 7; Chloride channel 7 alpha subunit; Chloride channel protein 7; ClC-7
Observed Band	90kD
Cell Pathway	Lysosome membrane ; Multi-pass membrane protein .
Tissue Specificity	Brain and kidney.
Function	disease:Defects in CLCN7 are a cause of autosomal dominant osteopetrosis type 2 (OPTA2) [MIM:166600]; also called autosomal dominant Albers-Schonberg disease or marble disease autosoml dominant. OPTA2 is the most common form of osteopetrosis, occurring in adolescence or adulthood. It is characterized by sclerosis, predominantly involving the spine, the pelvis, and the skull base.,disease:Defects in CLCN7 are the cause of osteopetrosis autosomal recessive type 4 (OPTB4) [MIM:611490]; also called infantile malignant osteopetrosis type 2. Osteopetrosis is a rare genetic disease characterized by abnormally dense bone, due to defective resorption of immature bone. The disorder occurs in two forms: a severe autosomal recessive form occurring in utero, infancy, or childhood, and a benign autosomal dominant form occurring in adolescence or adulthood.,function:Mediates the exchange of chloride io



Background

chloride voltage-gated channel 7 (CLCN7) Homo sapiens The product of this gene belongs to the CLC chloride channel family of proteins. Chloride channels play important roles in the plasma membrane and in intracellular organelles. This gene encodes chloride channel 7. Defects in this gene are the cause of osteopetrosis autosomal recessive type 4 (OPTB4), also called infantile malignant osteopetrosis type 2 as well as the cause of autosomal dominant osteopetrosis type 2 (OPTA2), also called autosomal dominant Albers-Schonberg disease or marble disease autosomal dominant. Osteopetrosis is a rare genetic disease characterized by abnormally dense bone, due to defective resorption of immature bone. OPTA2 is the most common form of osteopetrosis, occurring in adolescence or adulthood. [provided by RefSeq, Jul 2008],

matters needing attention

Avoid repeated freezing and thawing!

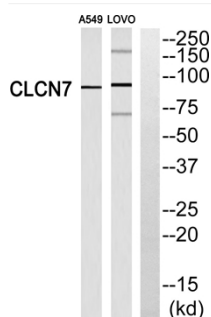
Usage suggestions

This product can be used in immunological reaction related experiments. For more information, please consult technical personnel.

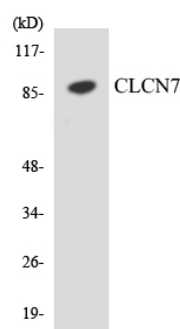
Products Images



Western Blot analysis of A549 cells using CLC-7 Polyclonal Antibody diluted at 1:500



Western blot analysis of CLCN7 Antibody. The lane on the right is blocked with the CLCN7 peptide.



Western blot analysis of the lysates from COLO205 cells using CLCN7 antibody.